

Power at Your Fingertips: New Expanded Transducer Family for the eHertz Series^{*}



Leveraging and combining unique transducer technology (single crystal, composite) with four matching layers, taking imaging to a new level of performance





C5-1Xp Single Crystal Curved Array	Broad Bandwidth: 1-5 MHz	192 Elements
Modes: Steerable PW and Color Doppler, CPD, DCPD, eSRI, Harmonic Imaging, and mFlow Imaging	Imaging: General Purpose Abdominal, OB/GYN, Advanced MSK, and Interventional Applications	Biopsy capable



L16-4Ep Linear Array	Ultra-Broad Bandwidth: 4-16 MHz	192 Elements
Modes: Steerable PW and Color Doppler, CPD, DCPD, eSRI, Harmonic Imaging, TDI, Real-Time Elastography, Panoramic Imaging, Expanded Imaging, and mFlow Imaging	Superficial Imaging: Small Parts, Breast, Vascular, MSK, Bowel, Pediatric, OB, Advanced MSK, and Skin	Biopsy capable



P5-1Ep Phased Array	Broad Bandwidth: 1-5 MHz	64 Elements
Modes: Steerable PW and CW, Color Doppler, TDI, High-PRF Doppler, and Harmonic Imaging	Imaging: Adult and Pediatric Echocardiography, Abdominal, and TCD Applications	Biopsy capable



L19-6Ep Linear Array	Ultra-Broad Bandwidth: 6-19 MHz	128 Elements
Modes: Steerable PW and Color Doppler, CPD, eSRI, Harmonic Imaging, Real-Time Elastography, Panoramic Imaging, TDI, Expanded Imaging, and mFlow Imaging	Superficial Imaging: Small Parts, Breast, Vascular, MSK, Bowel, Pediatric, OB, Advanced MSK, and Skin	Biopsy capable



L9-2Ep Linear Array	Broad Bandwidth: 2-9 MHz	192 Elements
Modes: Steerable PW and Color Doppler, CPD, eSRI, Harmonic Imaging, Real-Time Elastography, Panoramic Imaging, Expanded Imaging, and mFlow Imaging	Imaging: Small Parts, Breast, Vascular, MSK, Bowel, Pediatric, OB, and Advanced MSK	Biopsy capable



MC10-3Ep Micro Convex Array	Broad Bandwidth: 3-10 MHz	128 Elements
Modes: Steerable PW and Color Doppler, CPD, eSRI, Harmonic Imaging, and mFlow Imaging	Superficial Imaging: Small Parts, Breast, Vascular, MSK, Bowel, Pediatric, Neonatal Head, and Advanced MSK	Biopsy capable Max Visual Angle: 112°



E12-3Ep Curved Array	Broad Bandwidth: 3-12 MHz	192 Elements
Modes: Steerable PW and Color Doppler, CPD, eSRI, Harmonic Imaging, Panoramic Imaging, and mFlow Imaging	Imaging: OB/GYN and Urology Applications	Biopsy capable Max Visual Angle: 180°



P12-4Ep Phased Array	Broad Bandwidth: 4-12 MHz	96 Elements
Modes: Steerable PW and CW, Color Doppler, TDI, High-PRF Doppler, Harmonic Imaging	Imaging: Pediatric Cardiology and Neonatal Head	



iL20-6Ep Linear Array	Ultra-Broad Bandwidth: 6-20 MHz	192 Elements
Modes: Steerable PW and Color Doppler, CPD, DCPD, eSRI, Harmonic Imaging, TDI, Real-Time Elastography, Panoramic Imaging, Expanded Imaging, and mFlow Imaging	Superficial Imaging: MSK, Small Parts, Ophthalmology, Vascular, and Skin	Biopsy capable



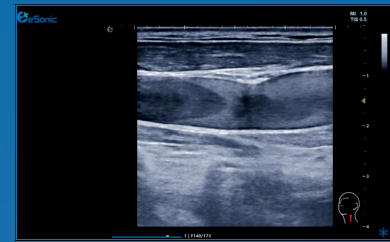
The eHertz series shares imaging architecture and transducers to help make the most of your ultrasound investment. Precise performance ultrasound imaging shows detailed essential structures, from deep abdominal views to superficial scans, from cardiac to transesophageal imaging.



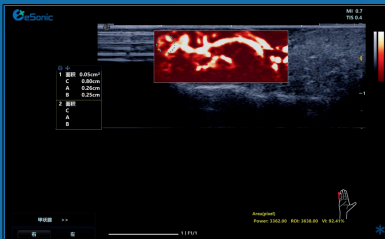
4 Chambers of Echocardiography



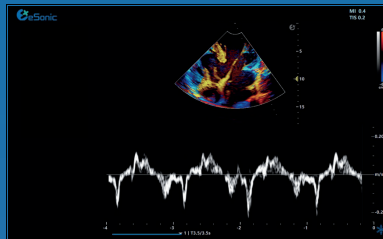
Liver Ultrasound



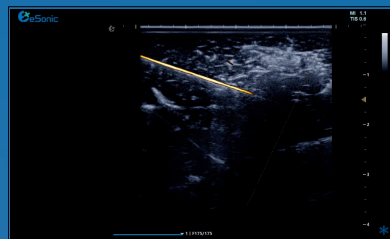
Spontaneous Echocontrast of the Jugular Vein



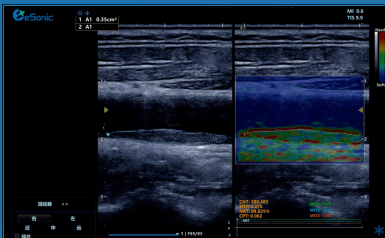
mFlow for Microcirculation



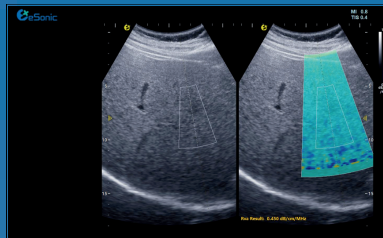
TDI for Tetralogy of Fallot



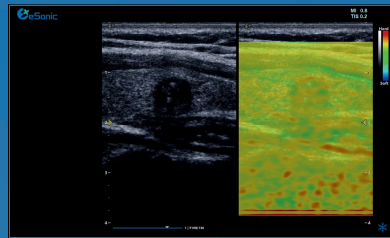
Intelligent Needle Visualization Tracking



RVP Carotid Plaques



RVA Attenuation Imaging for Fatty Liver



Real-Time Elastography

Exam Types

Abdominal
Lung
OB/GYN
Fetal
Cardiology
Vascular
Small Parts
MSK
Urology
Nerve

Imaging Modes

2D
M-mode
Anatomical M-mode
Color Doppler
Color Power Doppler
Directional Color Power Doppler
PW Doppler
CW Doppler
Tissue Doppler Imaging (TDI)
2D and Color Compare Mode
Trapezoidal Imaging
Full-Screen Mode

Image processing

eTuner Image Optimization
Real-Time eCompound Imaging
eSRI Adaptive Image Processing
Tissue Harmonic Imaging (THI)
Dual Mode
Duplex and Triplex Imaging
Quad View Imaging
One-Button Optimization
Enhanced Needle Visualization

Analysis Packages

General Measurements:

Distance, Ellipse Trace, Angle, Doppler
Trace, M-mode HR

OB Calculations:

BPD, AC, HC, CRL, FL, AFI, Growth Charts

GYN Calculations:

Uterine Volume, Ovary Volumes, Follicles

Cardiac Calculations:

Ejection Fraction, LV Mass, PHT, Peak
Velocity, HR

Vascular Calculations:

Automatic Doppler

Other:

Small Parts Volume, eIMT, MST, CNT, VI on
Selected ROI, MASR, Annotations, Body
Marks, Labels

Customization

User Presets
User Calculations
Programmable Function Keys
Customizable Layout
Customizable Workflow



Contact Us

www.esonicimage.com
esonic@esonicimageusa.com