



Future Ready with
RawVision Imaging
Power and Smart
Design

Contact Us
www.esonicimage.com
esonic@esonicimageusa.com



eHERTZ

The New Wave in Cutting-Edge
Portable Ultrasound

ABOUT US

eSonic is committed to becoming an industry leader and innovator. The eHertz suite of products is supported by a world-class team of technical and educational support specialists.

The combination of the latest computer technology, biomarkers, and the RawVision platform delivers an innovative and intuitive system with best-in-class performance.

BIG POWER in a small package

Ideal for Anesthesia, Breast, Cardiology, Critical Care, Emergency Medicine, Lung, Musculoskeletal (MSK), OB/GYN, Vascular, and more. With advanced computer technology and our proprietary design, from point-of-care to medical imaging centers, the eHertz is changing the way healthcare providers practice medicine.

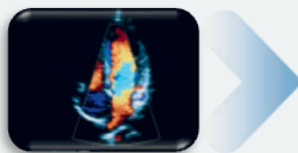


The New Wave in Ultrasound

- The newest computer technology
- eCompound



Believe What You See, Go Deeper



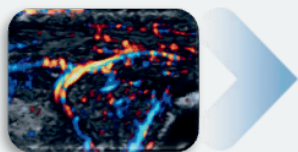
UltraFast Imaging

The eHertz comes with the latest computer technology, full software-based beamforming, fewer hard drives, more efficient energy use for a quicker boot-up, and faster frame rates and processing speeds.



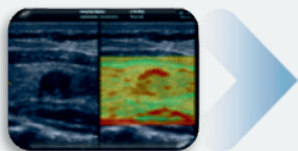
eCompound

The new eCompound imaging capability provides sharper detail, image clarity, and better contrast resolution and border definition for a more powerful imaging experience.



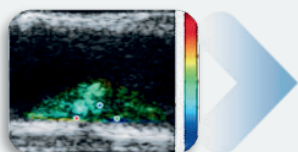
mFlow

The combination of ultrasensitive Doppler with improved resolution and unique 3D smart wall filtering creates a new level of performance in microvascularization imaging with linear and curved probes.



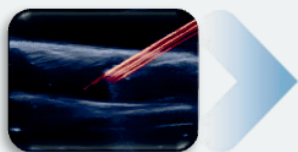
RTE

Real-time elastography clearly shows the stiffness of small lesions, providing a better characterization of whether they are benign or malignant.



RVP

Real-time quantification of the vulnerability of the carotid plaque evaluates the strain generated by the carotid on the plaque, using textural features extraction to assess the risks and probability of its vulnerability.



Needle TS and eMap

Needle TS provides better needle guidance at steeper angles without image degradation or drops in frame rates. eMap provides a unique capability to color the needle, enhancing its visualization.



Specifications

- 15.6" Ultrasresolution
- Hot-Swappable Battery
- RawVision Platform
- Real-Time Elastography
- Ergonomic Soft Keys
- Durable and Impact-Resistant
- Smart Console
- Intuitive Interface
- eTuner
- Smart Optimization



- Needle TS and eMap
- mFlow
- RVP Plaque Quantification
- DICOM Structured Reporting
- Multi-Probe Connector Kit
- Cybersecurity and Encryption
- eIMT
- Adjustable Cart Height and Tilttable Angle to 30°