

RawVision™ Imaging

Musculoskeletal Ultrasound



Quality imaging

The eHertz offers precise ultrasound imaging for musculoskeletal applications, providing improved diagnostic efficacy for muscles, joints, ligaments, tendons, and cartilage both at rest and in motion.



Innovative Tool

The eHertz is easy to use and a more cost-effective option than an MRI. Our platform offers significant innovations designed to provide the user with breakthrough solutions and create intuitive and innovative workflows for greater diagnostic confidence.



The New Standard in Ultrasound

eSonic introduces the TGC and eTuner™ embedded into a brand-new user interface, disrupting conventional imaging, enhancing workflow, and improving ease of use.





L16-4Ep Linear Array

The perfect solution for an outstanding image without compromising penetration. Supports a wide range of MSK anatomies

L9-2Ep Linear Array

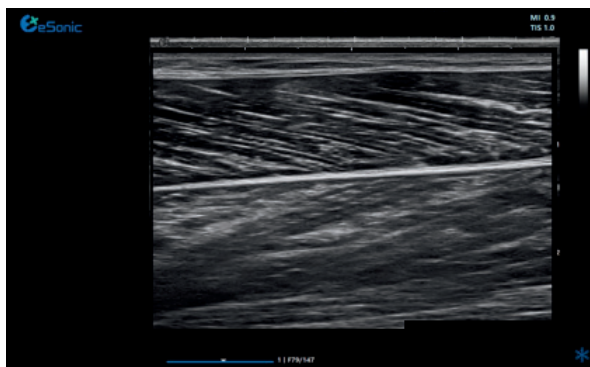
General purpose linear array. Delivers high performance and resolution

L19-6Ep Linear Array

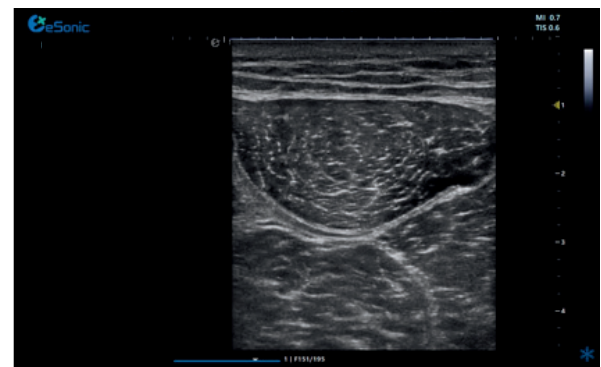
Excellent imaging for vascular and skin. Delivers increased versatility with a broad range of imaging presets

MC10-3Ep Micro Convex Array

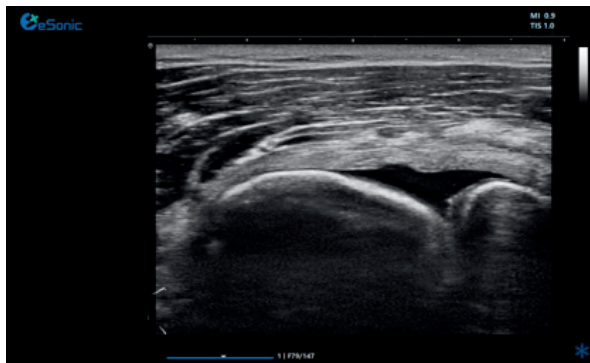
Assess muscle and tissue injuries and perform injections with confidence, even in neonates with brain injuries



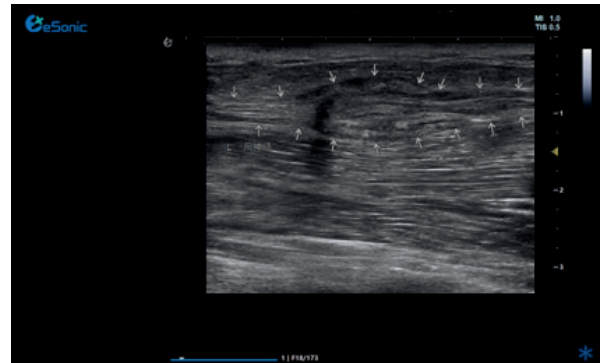
Normal long-axis muscle scan shows a "feather-like" distribution of muscle texture



Normal short-axis muscle scan shows a "steak-like" distribution of muscle texture



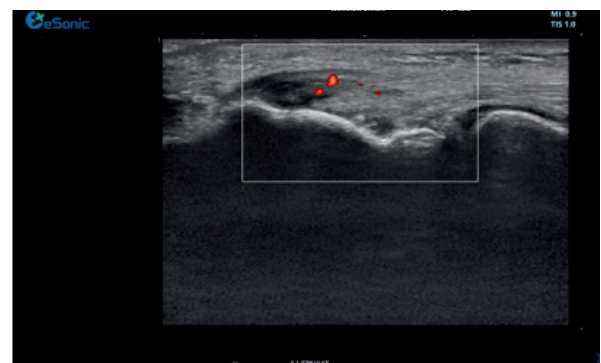
Disruption of lateral collateral ligament of elbow joint



Neuroma formation three months after ulnar nerve suture surgery



Bone spurs on the patella and inflamed area in the quadriceps femoris tendon



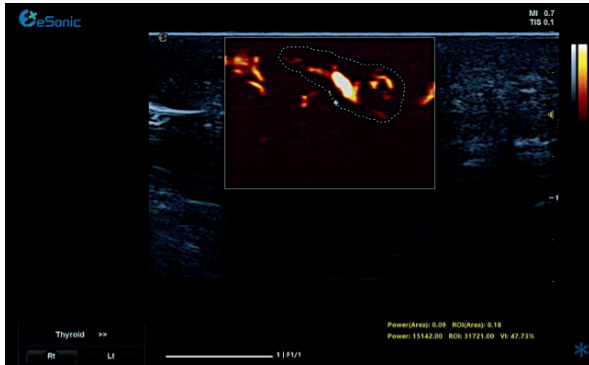
Congestion during the active phase of tendinitis



Advanced Features

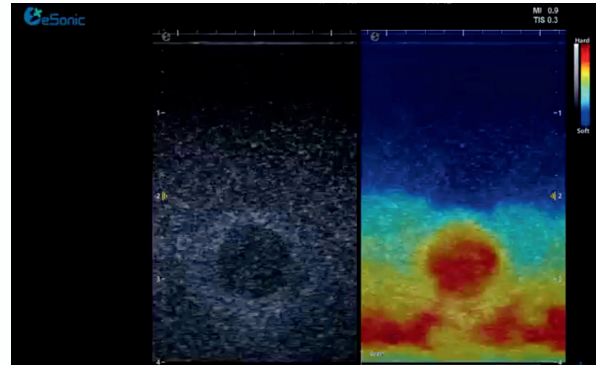
mFlow

Unique 3D smart wall filtering creates a new level of performance in microvascularization imaging without the need for contrast



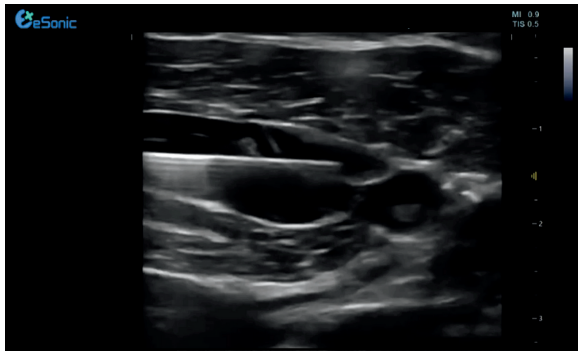
RTE

Real-time elastography can visualize anatomy and function (tissue stiffening) with small volumes and insensitive blood flow



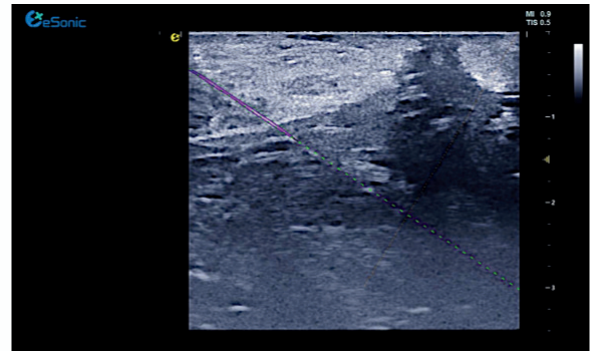
Needle TS™

Visualizing the needle predicts its trajectory and allows it to perform biopsies precisely and confidently



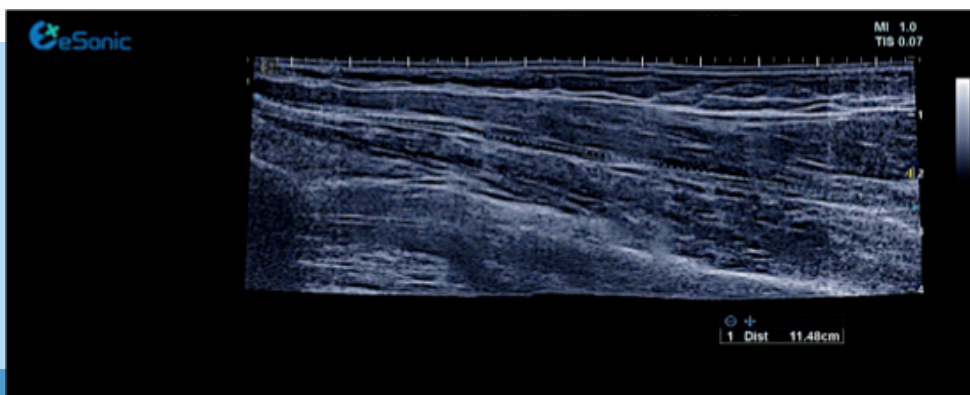
eMap™

Provides a unique capability to color the needle, enhancing its visualization



Panoramic View

Provides a complete overview of MSK and vascular anatomical structures.



Innovation for Clinical Value in Existing and New Domains

Innovative Ultrasound

The eHertz comes with the latest computer technology, along with full software-based beamforming, fewer hard drives, more efficient energy use for a quicker boot-up, and faster frame rates and processing speeds.

eSonic Membership Option

Purchase your eHertz outright or join the eSonic Membership for added service and options

- ✓ Online System Service
- ✓ Online Software Updates
- \$ Options Activation



Easy To Use

The latest computer technology for the eHertz RawVision™ platform automatically delivers the best imaging.



Innovative Design

Innovations that provide unique ultrasound user experience by transferring all the intelligence of ultrasound into software.

Future Ready with
RawVision™ Imaging
Power and Smart
Design



Specialized Use

Dedicated workflows for MSK

eSonic is committed to becoming an industry leader and innovator. The eHertz suite of products is supported by a world-class team of technical and educational support specialists.

The combination of the latest computer technology, biomarkers, and the RawVision™ platform delivers an innovative and intuitive system with best-in-class performance.

Contact Us

www.esonicimage.com
esonic@esonicimageusa.com